

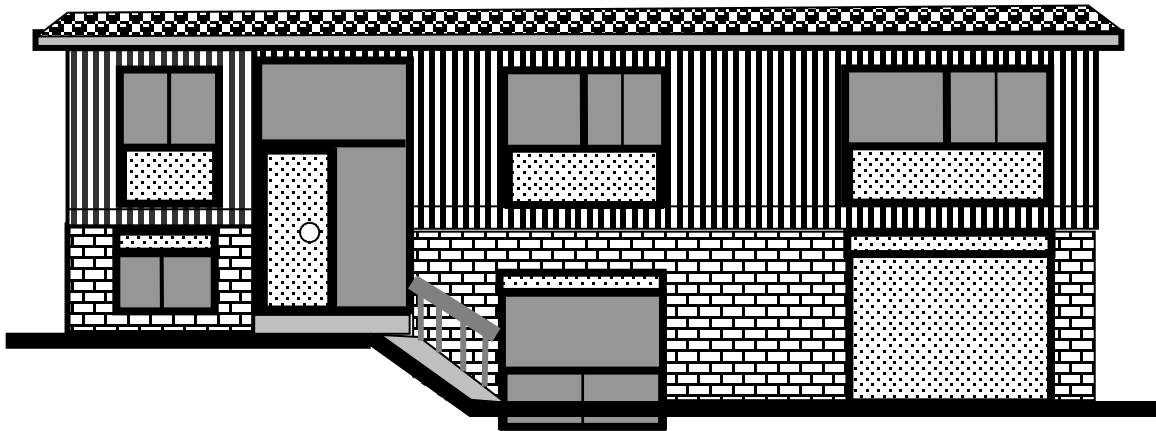
Painting by the Numbers for Truro's Modern homes

We have color charts that may be found on-line at trurohomes.org. In them we consider just two colors; the **SIDING** color for grooved wood panels, gutters, downspouts, window trim, and fascia and the **ACCENT** color for doors and plain wood panels (above and/or under windows and doors.) The wood panels should be stained while the doors may be painted.

In many of the Truro Modern homes, we need to consider the brick color as well. The committee will consider an additional color for the doors only, but will not approve white replacement windows or white window trim.

In general, siding colors are natural colors that may be found in the winter woods. They will be "greyed." That is to say that the complement (color opposite on the color wheel) will be added to the basic hue color, effectively toning it down.

The roof should be harmonious with the brick tone and siding color. Because working with color is not easy, we ask that you get approval for your choices from the ACC prior to re-staining and/or re-painting.



Hillview

This split-foyer house has strong vertical elements. A balance between the three colors: brick, siding, and accent colors is important, since the areas are about evenly divided. Two of the three areas should be similar in hue with the third a contrasting color. Fortunately, the roof color is not easily seen.