

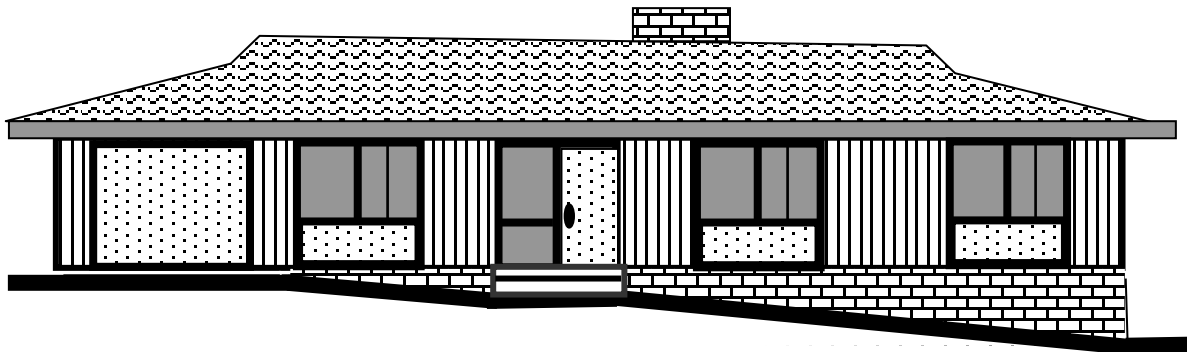
# Painting by the Numbers for Truro's Modern homes

We have color charts that may be found on-line at [trurohomes.org](http://trurohomes.org). In them we consider just two colors; the **SIDING** color for grooved wood panels, gutters, downspouts, window trim, and fascia and the **ACCENT** color for doors and plain wood panels (above and/or under windows and doors.) The wood panels should be stained while the doors may be painted.

In many of the Truro Modern homes, we need to consider the brick color as well. The committee will consider an additional color for the doors only, but will not approve white replacement windows or white window trim.

In general, siding colors are natural colors that may be found in the winter woods. They will be "greyed." That is to say that the complement (color opposite on the color wheel) will be added to the basic hue color, effectively toning it down.

The roof should be harmonious with the brick tone and siding color. Because working with color is not easy, we ask that you get approval for your choices from the ACC prior to re-staining and/or re-painting.



## Ridgeview

This rambler, with its iconic roof-line, has three colors to co-ordinate: the roof, the siding and the accent color. This house established vertical elements from the window/panel combinations. A one-car garage door in the accent color can reinforce this, but use the siding color for a two-car garage door.