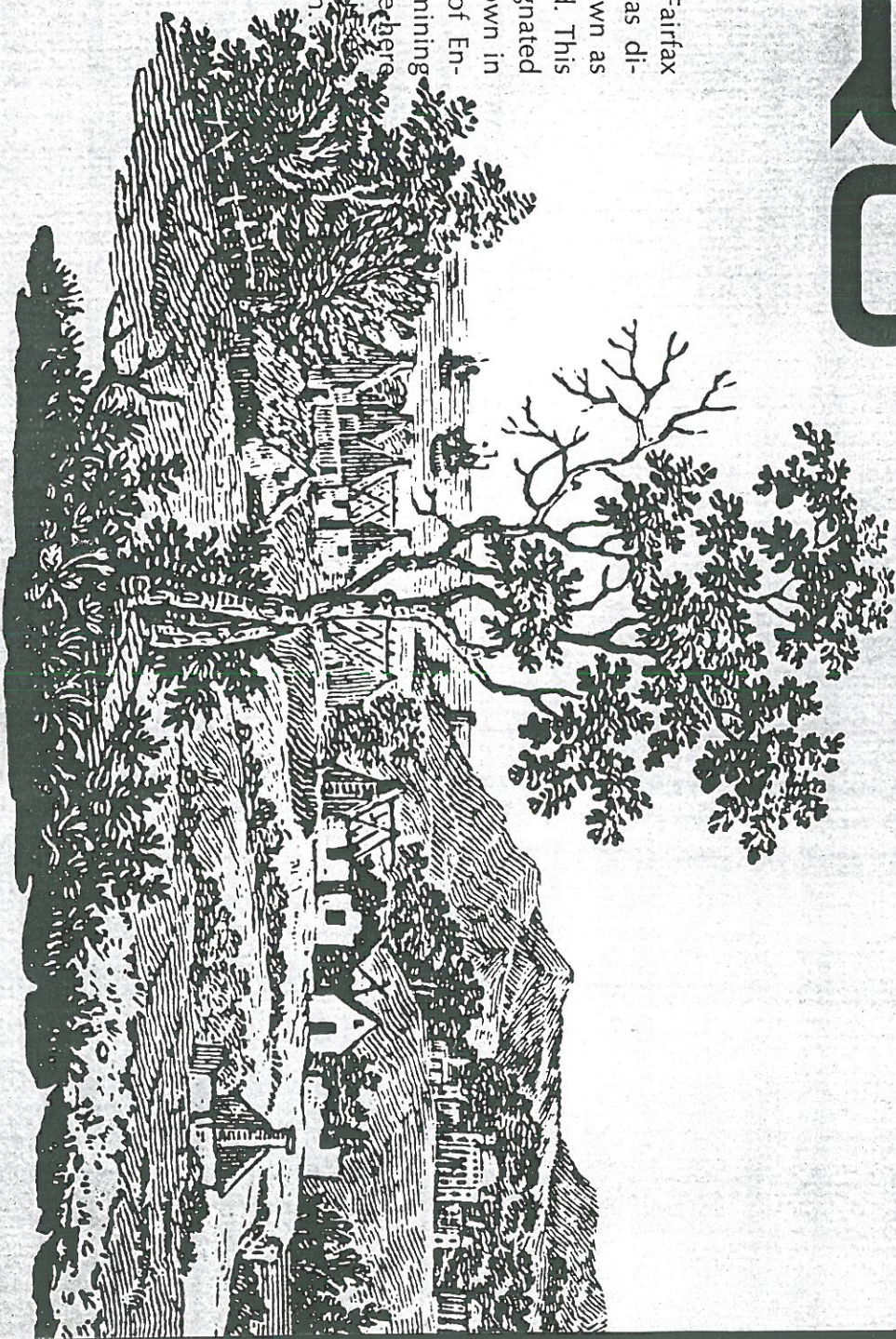


**Tradition  
and tomorrow ...  
today at**

# TRURO

There was a Truro before there was a Fairfax County. In colonial days, Virginia was divided into geographical divisions known as "parishes", by the Church of England. This section of Northern Virginia was designated "Truro Parish", named for Truro, a town in Cornwall in the southwestern part of England. Truro, England, was in a tin mining area and an early discovery of tin ore here led the church elders to believe that the tin of Virginia would also produce tin.







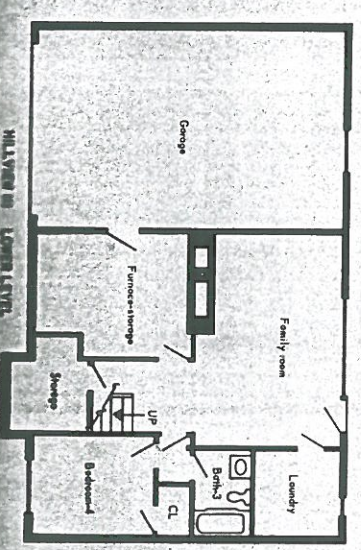
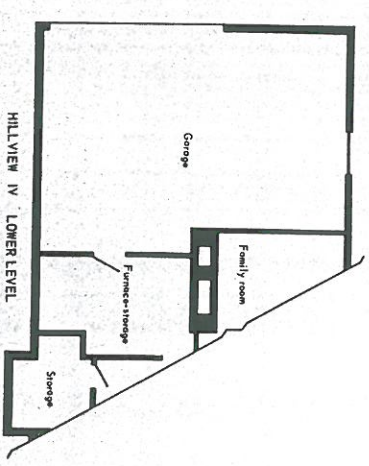
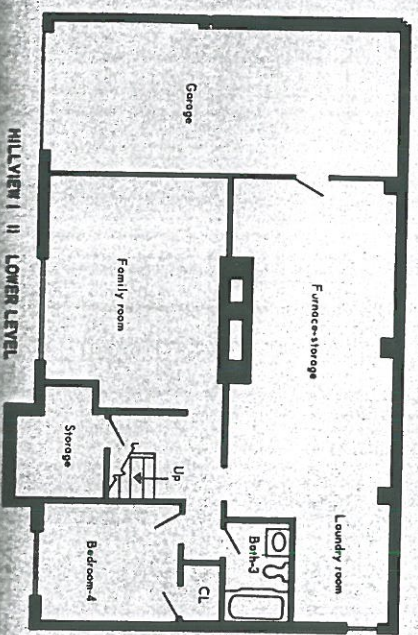
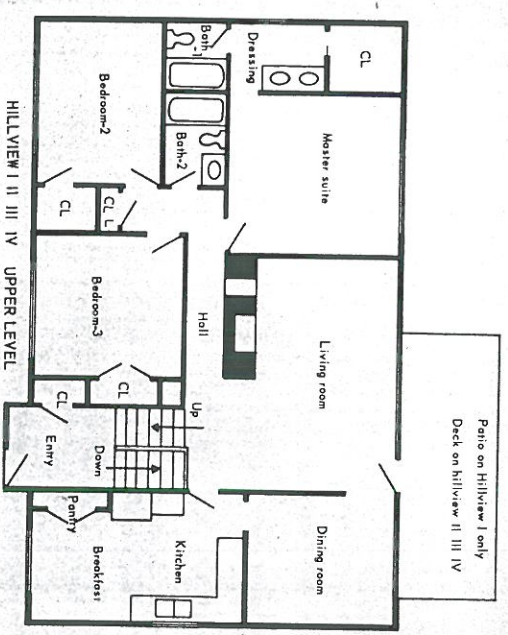
# Hillview

This house has a woodbox that, when empty, becomes a secret passage. For your little boy, that would be reason enough for choosing the Hillview. If you want more prosaic reasons, choose from these: air conditioning, wall-to-wall carpeting, redwood ceilinged family room, four big bedrooms, and a view from a hill. Want still more reasons? Then just walk into the house, look up the stairs and across the living room through a large window. Observe the 10 foot wide wood deck and begin to visualize how you'll entertain there, have breakfast there, or even do early morning push-ups there. The double-car garage is ten feet deeper than your car is long, so that youngsters can claim their just area for bikes, trikes, and wagons. This home with a view from a hill has 3,012 square feet under roof.

## The pastoral panorama of the landscape has been preserved and the street names

At Truro you'll find Necostin Way named after the Indians who inhabited this area. Early Jesuit explorers Latinized the name adding an initial "A" which comes down to us today as the Anacostia River. You should expect to find the genuine at Truro!

Turkey Creek Court echoes the name of the stream it overlooks. It was so named in the indeterminate past for the abundance of wild turkey that found refuge among the trees along its banks. Rucker Court and Herman Schmidt Court recognize the immediate neighbors of the Truro property. As a tribute to the

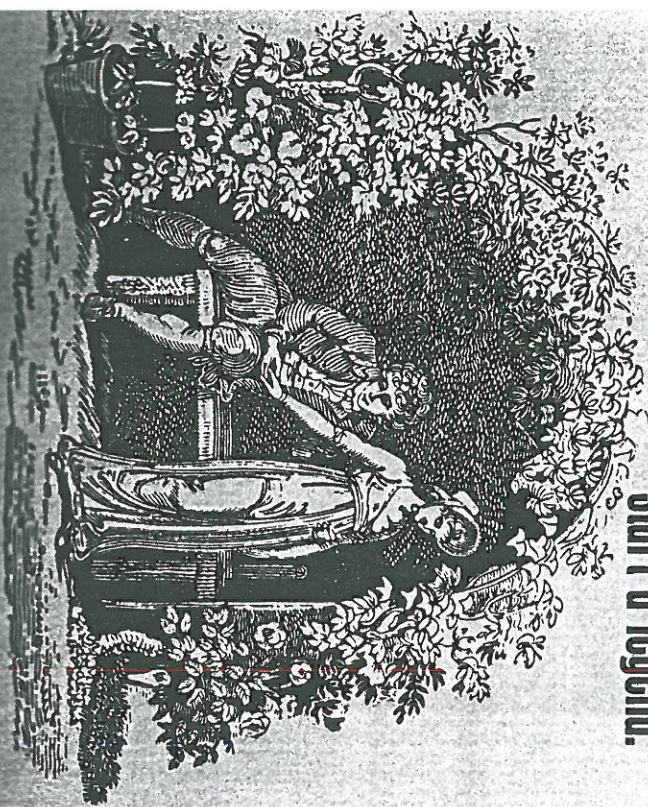




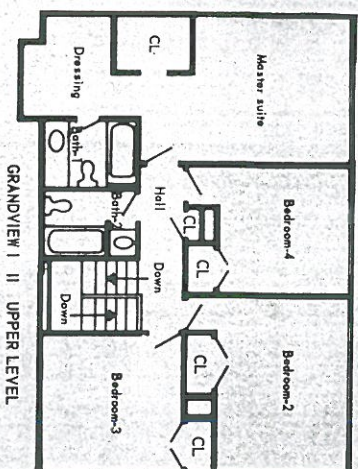
modern era, you'll find Yerkes Court named in honor of David Yerkes, of Deigert and Yerkes, A.I.A., architect for many of the Truro homes. Unsung heroes do not go unsung at Truro. Therefore, we have Pappas Place named for Nick Pappas, talented right-hand man of Mr. Yerkes, whose many ideas and architectural details enhance the modern Truro.

Perhaps the most fateful episode from the Truro annals concerns the ill-starred lovers, Anne Fitzhugh and Charles Hawkins. Anne, the daughter of substantial Virginia gentry, was in love with Hawkins, a dashing young captain in the British army. When war broke out in the colonies, Captain Hawkins became

**When she fell in love with the dashing British soldier, she didn't know she would start a legend.**

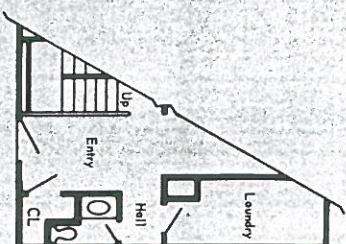


# Grandview

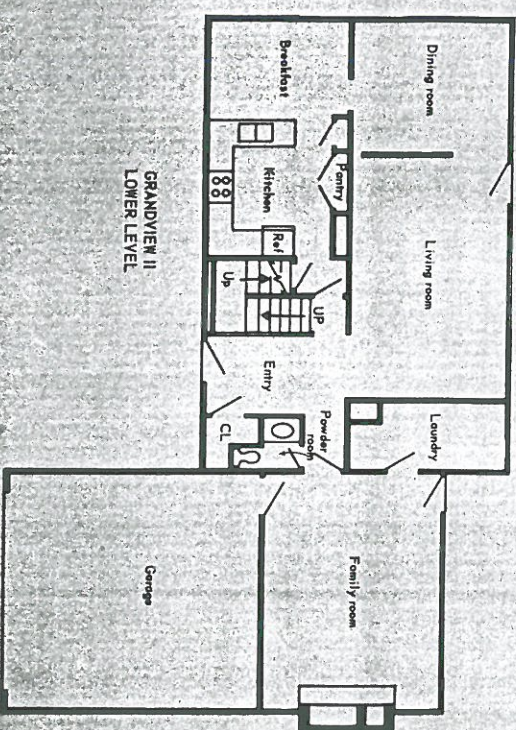


GRANDVIEW I II UPPER LEVEL

This home has four entrances from the outside, but everyone can fit into the eighty-five foot natural slate entry. If you have a hard time storing a card table and chairs, open the entry closet and you will find a special alcove for just such paraphernalia. Doing laundry is no one's pleasure, but its displeasure is held to a minimum by the convenient first floor location of the laundry room with its laundry chute and natural daylight. The master suite is one flight of stairs and the length of the house removed from the family room to promote coexistence between the Bach and Rock. The walk-in closet in the master suite will hang 211 women's dresses with enough room left over for 2 men's suits! The Grandview is the largest Truro home with 3,670 square feet under roof.



GRANDVIEW I LOWER LEVEL



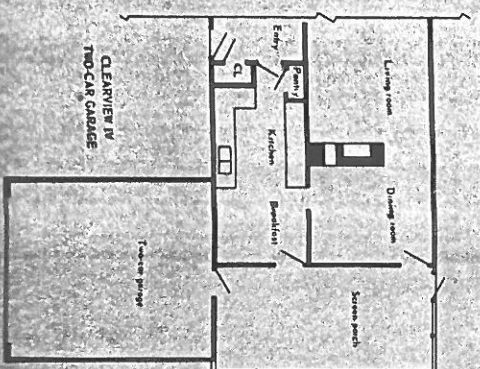
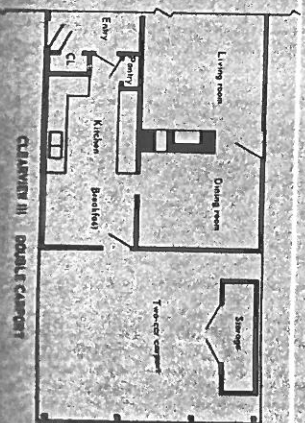
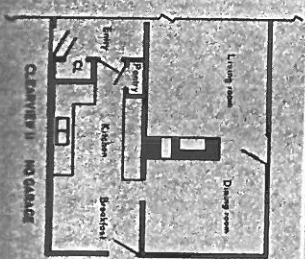
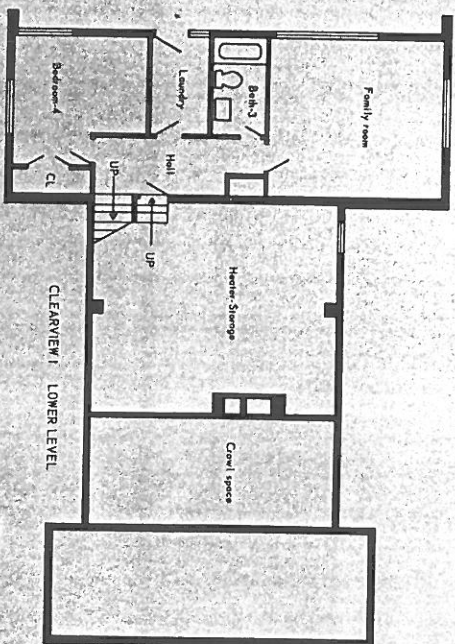
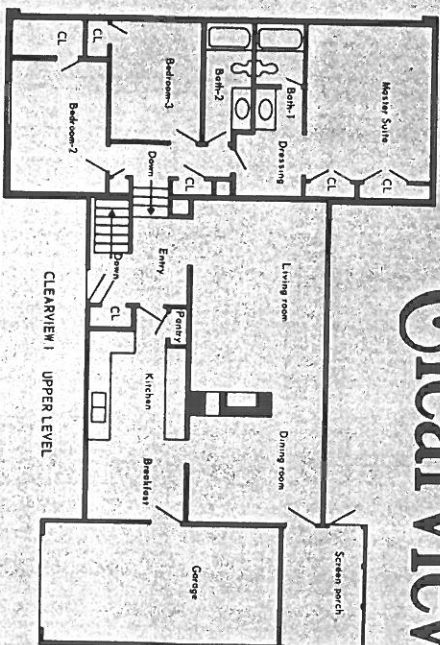
GRANDVIEW II LOWER LEVEL



a frequent, albeit furtive, visitor at Oak Hill, the still-standing mansion near Truro. One evening while Captain Hawkins was at Oak Hill, a band of Colonists approached the house. The Fitzhughs hid Hawkins and Anne in the attic. Not finding them in the house, the Colonists were about to leave when one young patriot heard a noise from the attic. He drew his sword, thrust it through the ceiling and left without investigating. Anne died on the spot, without a murmur, thus protecting the life of her lover. Hawkins escaped through an attic window and was never seen again. Unless, of course, he could be the uniformed ghost seen at the corner of Anne Fitzhugh and Charles Hawkins Drive.

After this sad experience, the Fitzhughs left the Oak Hill home and it was then occupied by the Battalies, cousins of the Fitzhughs. Nothing else is known of the Battalies, but we've rescued them from obscurity with Battalies Place. A neighboring great mansion of colonial times was called Ossian Hall. The real Ossian Hall burned in 1959, but its memory

# Clearview



"Looks" are one of the real attributes of this home. As looked at from the front, the 62 foot Clearview nestles into the natural terrain of a lot that slopes gently from side to side. Looking at it from the side or rear reveals that the same good-looking brick and cedar siding used on the front is continued around the entire house. Once inside, you can look through the fireplace woodbox and look over the room divider fireplace which adds to the looks of the living and dining room. Look for the door leading from the screened porch, which is hidden behind the garage from the looks of strangers passing by. You cannot look up or down the stairs from the entry into any room, thus assuring privacy. You can look out of the daylight laundry room, and the formal living area can always be kept in looking glass shape since the laundry room doubles as an entrance for the kids. You should have a clear view now of why you can look a long time before you find 3,196 square feet under roof, better arranged than our much-looked-at Clearview.

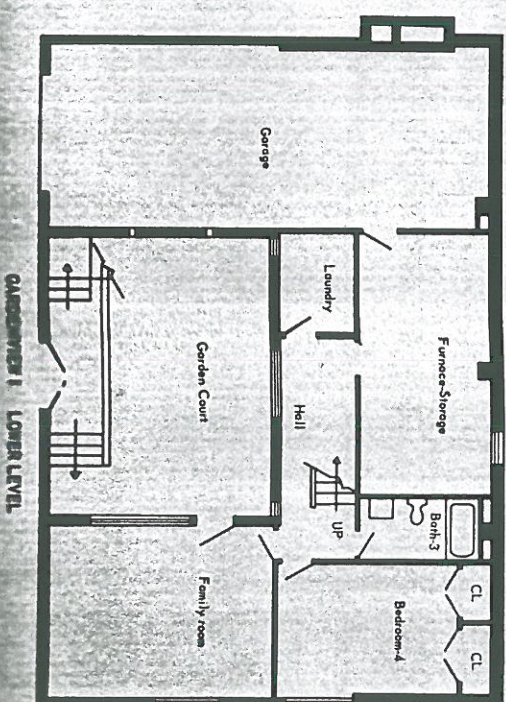
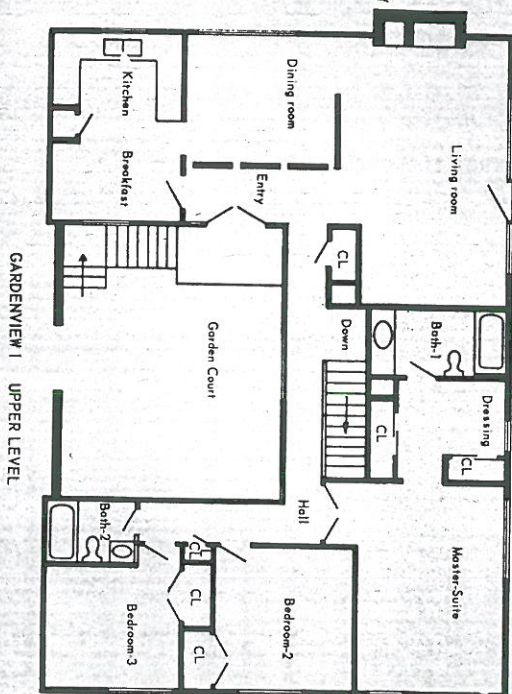


is preserved in Ossian Hall Lane. A grand-daughter of the Fitzhughs of colonial days, Mary, became the wife of Robert E. Lee and hence, Mary Lee Lane. The Lees had a laundress known to us only as Aunt Lilly. Aunt Lilly spent some time at Oak Hill and stories of the bloodstained floors, of doors mysteriously opening, and of Anne's mysterious footsteps were told by her so often they became folklore. Footstep Court and Lilly Lane are derived from this era. Can you think of other addresses that would be better conversation starters?

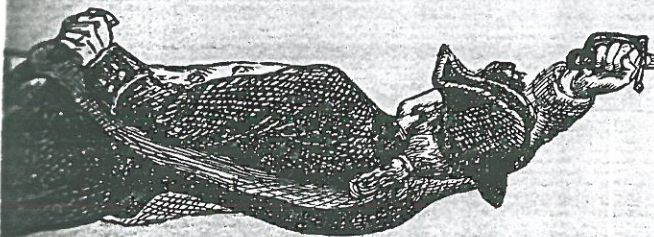
When your kids come in covered with the reddish-brown clay indigenous to Northern Virginia, they're bringing in deposits of the Wissahickon formation, the oldest geological formation found in Fairfax County. It was originally named after Wissahickon Creek in Pennsylvania where the formation was first observed. Genuine Wissahickon may be spotted at Truro, perhaps along Wissahickon Way or on the seat of Junior's jeans. Not a very exciting story, but then, have you ever tried to romance mud?

## Gardenview

You actually enter this home twice... once into the landscaped freshness of the garden court hidden behind a solid masonry wall, and a second time into the house itself through the double front entry doors. The upper hall and the breakfast area are oriented to share the courtyard. This house plan generates many surprise corridors which create an interest that is all too frequently missing from today's homes. The 31 foot long master suite is entered through double doors and encompasses a separate dressing area and generous bath. The lower level has a family room with an entrance to the court, a daylight finished laundry room, complete bath, and a fourth bedroom ideally situated for a den, study, or guest room. Honesty prevents us from calling this a two-car garage, but you'll probably park two cars there anyway, in addition to all the play vehicles needed by growing youngsters. This home with a garden view, has 3,125 square feet under roof.



LEGACY  
OF  
TRURO:





# Indians lost to the conquerors, Colonists battled British, Robert E. Lee visited there.

## Now we embark upon a

## new period

Truro today has a wooded park nearly a mile long which follows the meanderings of Turkey Run Creek through the property.

## In the history of

## Truro.

The park will belong to the community, and will contain play areas, pathways, tennis courts, swimming pool, and a community clubhouse. Truro will have over three hundred homes sited to take advantage of the rolling terrain and designed to allow the beauty of the outdoors to become a part of the home.

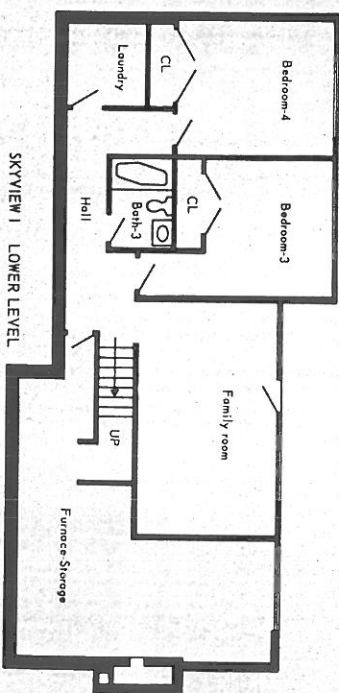
Your own young Indians are likely to find a plant called bloodroot, used by the real Necostin Indians for war paint, growing in the park or one of the natural wooded areas surrounding many of the homes. They're also likely to discover spring beauties, jack-in-the-pulpits, true and false solomons seals and two-lined salamanders.

To preserve these areas during construction of Truro, special fences are erected to keep out workmen and the ubiquitous bulldozer. In addition to providing a study in nature, these natural areas with their large and small trees, help to accent the homes themselves. In the summer, these areas require no grass cutting and you can let the leaves fall where they may in the autumn.

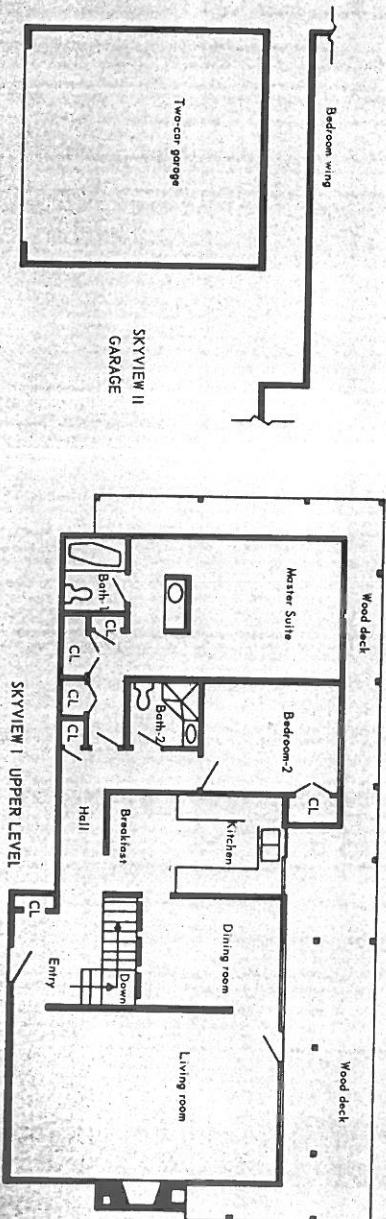


# Skyview

For the dernier cri in homes, you'll want to view the Skyview, designed by architect Hugh Newell Jacobsen, A.I.A. For a conversion starter, there's the redwood, elevated living room ceiling, which takes the configuration of the exterior and is capped by a skylight, giving this home its name. You can glance out the living room onto a 7 1/2 x 32 foot deck that narrows to encompass the entire house. On this deck, you'll find a countertop, serviced by an unusual countertop height passageway window in the kitchen, thus making it a pleasure to serve or entertain on the deck. Downstairs, you will find a family room, two more bedrooms, a complete third bath, and a finished laundry room. Few homes have the freshness that is encompassed in the 2,528 square feet under roof of this home.



SKYVIEW I LOWER LEVEL



SKYVIEW I UPPER LEVEL

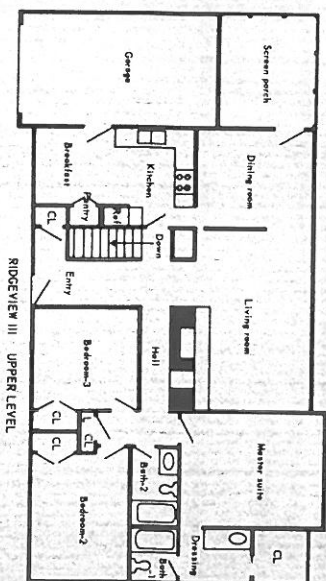
The early Colonists didn't mine tin here and we'd like to give a few reasons why Miller and Smith aren't mining tin either. All exterior wood siding and trim is either redwood or cedar. These superb woods never need painting as the natural immunity that protected the tree, protects the house. The manufacturer guarantees the siding for the life of the house. The wood is stained for architectural variance, but over the years, you may choose to let it weather naturally. Examine the exterior doors carefully. Their special construction means they'll never warp and they're weatherstripped, the same as your refrigerator door.

Ancient Greeks meticulously sculpted the unseen side of a frieze because the gods would know. Can we do any less because you will know? Only kiln-dried lumber, shipped from the West Coast is used to minimize shrinkage and maximize stability. Insulation is placed everywhere possible—in the ceiling, in side walls, in the end of joists, in the crawl space, and in the masonry walls. Each "in the" saves heating and cooling costs. Sound insulation is used where bedrooms abut. The windows we use have such a low air infiltration factor (that means less drafts) and are so sturdy, that they are frequently specified for high rise apartments, where the top stories are subject to severe wind strains. That's why Miller and Smith homeowners consistently record lower heating and cooling costs than their traditionally-minded friends.

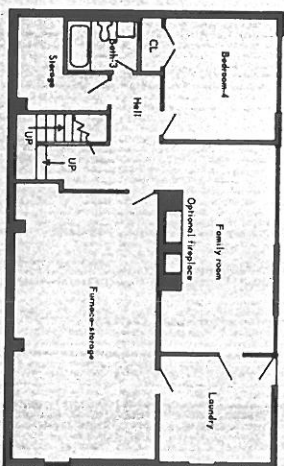
We all like the fresh air of the outdoors so why not bring it into the house? The engineered heating and cooling system has a duct to the outside which allows up to a 5% inflow of fresh air into the system so that stale air is not allowed to accumulate. This introduction of fresh air into the home builds up a slight positive pressure so that unwanted drafts are minimized. Naturally, you can adjust the inflow to fit your particular needs.

We had a choice in hot water heater sizes and chose the largest available—an 80 gallon monster that will endlessly cater to your family's need for this ephemeral necessity. We also chose the hardest fired

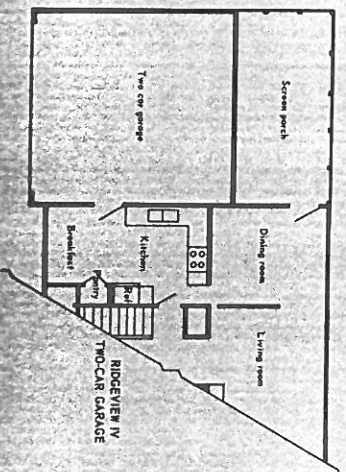
# Ridgeview



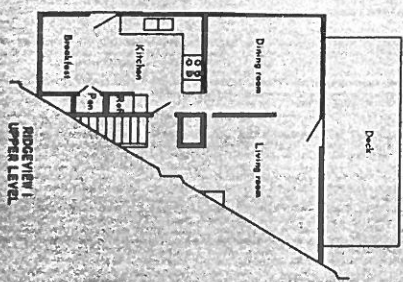
RIIDGEVIEW III - UPPER LEVEL



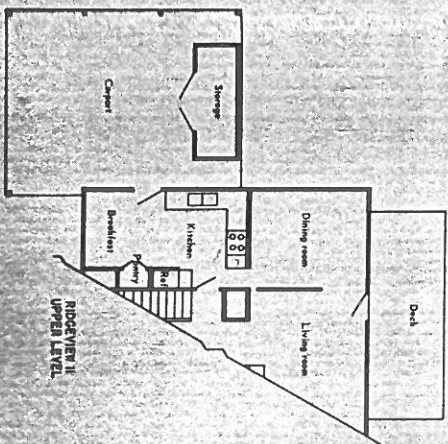
RIIDGEVIEW I II III IV - LOWER LEVEL



RIIDGEVIEW IV - TWO-CAR GARAGE



RIIDGEVIEW I - UPPER LEVEL



RIIDGEVIEW II - UPPER LEVEL

One of the qualities common to a well-designed contemporary home and to traditional Japanese architecture, is the melding of home with landscape. This house, sited on the edge of a ridge, illustrates well this architectural concept. The redwood fascia and large roof overhang, give the one-story front elevation a ground-hugging look reminiscent of Japanese styling while the two-story plan at the rear, shows how well the design is suited to the natural setting. Aesthetics are not subservient to function—the garage is adjacent to the kitchen so that unloading a supply of groceries does not become a backbreaking chore. If you enjoy weekend guests, you can provide for them lavishly in their own retreat in the fourth bedroom and third bath on the lower level. The family room is there with space left over for a finished daylight laundry room or perhaps a shop organized for hobbies or special family interests. All this is delightfully packaged as 3,230 square feet under a neo-hip roof.



ceramic tile, the strongest, type "S" mortar, six bag exposed aggregate concrete, seal-tab shingles, and recessed gutters. If cleaning an oven isn't your forte, try flipping a switch on our Frigidaire self-cleaning oven and let eight cents worth of those ready kilowatts do the job. You can also forget about defrosting the 15 cu. ft. refrigerator in our wife-oriented kitchen. We couldn't make up our minds about the kitchen cabinets, so you have four choices to coordinate with your countertop and flooring selections. You'll also enjoy selecting from twenty-two different carpet selections as wall-to-wall carpeting is included. If you'd like to choose a special feature or custom item, you can probably find it on the Miller and Smith Option List.

Truro in Cornwall still exists. Truro Parish Church can be viewed on Main Street in Fairfax City. Miller and Smith Associates would be happy to introduce you to our Truro. We'd like to believe it will be around for a long time, too.

